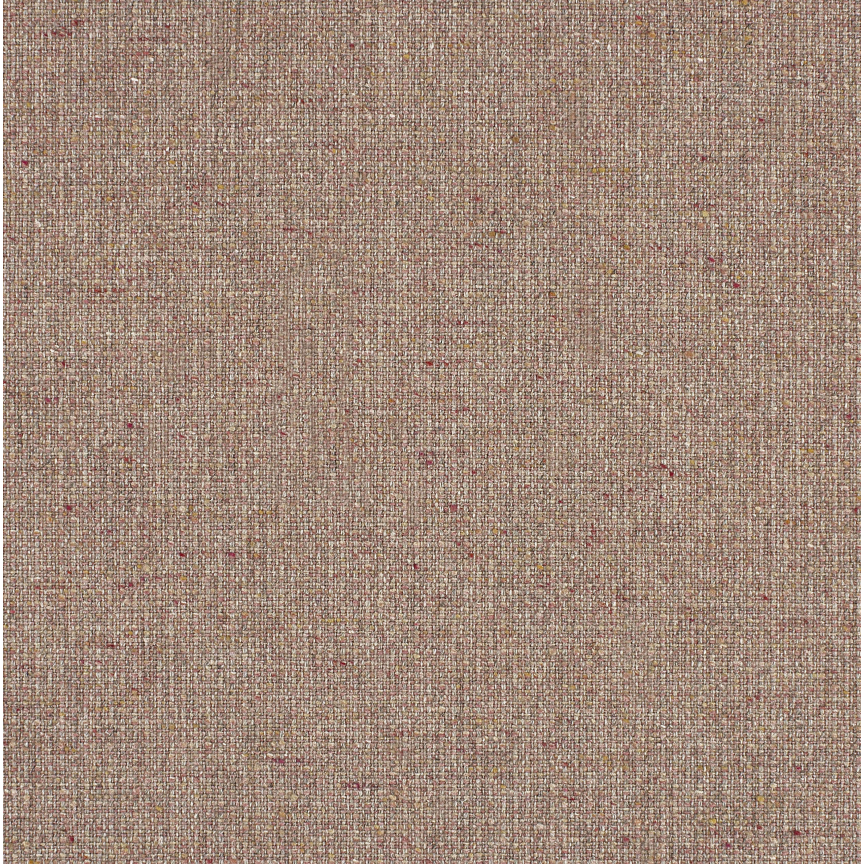


# HBF TEXTILES



## Crafted Felt

1017-40 Lychee

\$74.00/yard



1017-25 -  
Honey



1017-31 -  
Hazelnut



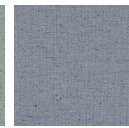
1017-40 -  
Lychee



1017-46 -  
Rosehip



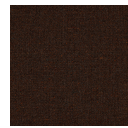
1017-56 -  
Juniper



1017-58 - Blue  
Elderberry



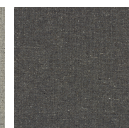
1017-59 - Wild  
Blueberry



1017-74 -  
Ancho Chili



1017-81 -  
Oyster



1017-89 - Grey  
Salt



1017-90 - Black  
Truffle

<b>DESIGNER</b>	Christiane Müller
<b>APPLICATION</b>	Upholstery, drapery
<b>CONTENT</b>	67% wool, 28% polyester, 3% nylon, 2% acrylic
<b>WIDTH</b>	55"
<b>REPEAT</b>	None
<b>WEIGHT</b>	14.83 ounces per linear yard
<b>FINISH</b>	None
<b>BACKING</b>	None
<b>ABRASION</b>	100,000 double rubs (W)
<b>ORIGIN</b>	Italy
<b>FLAME RESISTANCE</b>	California TB 117-2013 Section 1 (Pass), NFPA 701 (pass)
<b>MAINTENANCE</b>	S: Clean with water free dry cleaning solvent




---

**SUSTAINABILITY**

67% rapidly renewable content.

Third party certified, Indoor Advantage™ Gold.

Based on disclosure from the supplier this product does not contain harmful chemicals listed on the Red List.

Free of intentionally added PFAS chemicals.

---

**PRICE | GRADE**

\$74.00 | HBF Grade H

---

**ACT REGISTERED CERTIFICATION**




---

**PRICE LIST**

[Go to price list](#)

---

**DOWNLOAD**

[Fabric Product Documents](#)  
[Maintenance](#)  
[Sustainability Statement](#)  
[Sustainability Certification Summary](#)  
[Indoor Advantage™ Certificate](#)  
[Sustainable Contents](#)

---

**OTHER**

[Other](#)  
[Media Kit](#)  
[News & Events](#)  
[Presentation](#)  
[PFAS - FAQ](#)