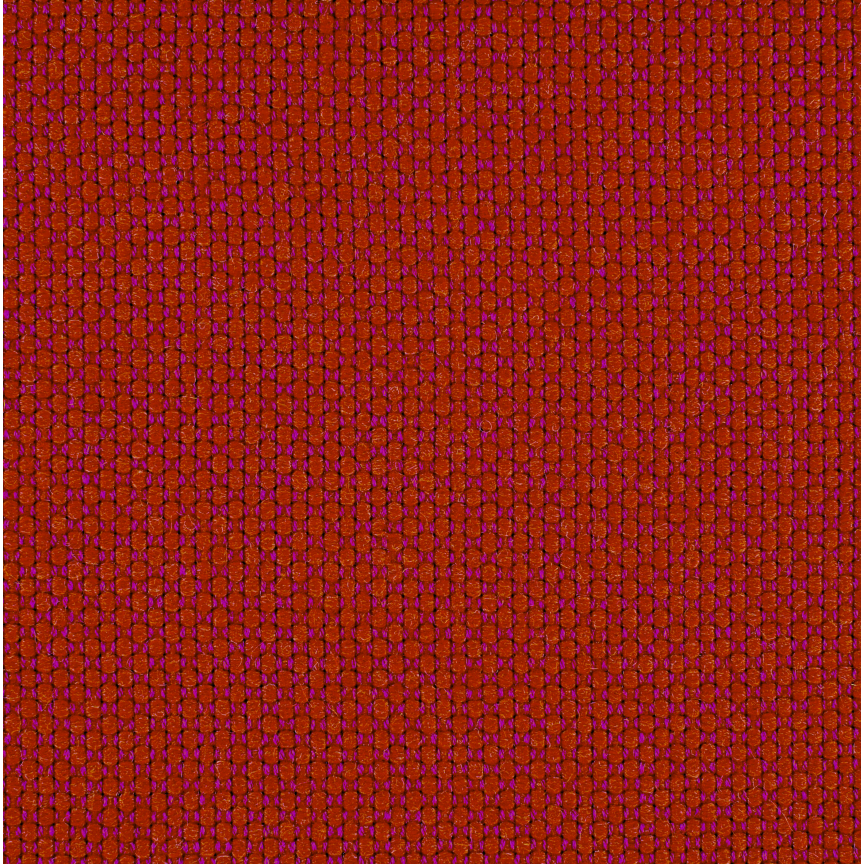


HBF TEXTILES



Double Stitch

986-43 Tomate

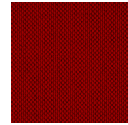
\$89.00/yard



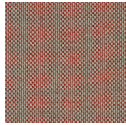
986-11 - Crème



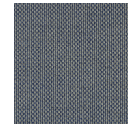
986-43 -
Tomate



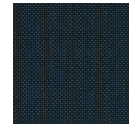
986-44 -
Rouge



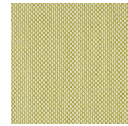
986-48 -
Vermeil



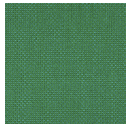
986-58 - Bleu
Marine



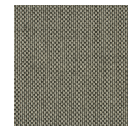
986-59 -
Cobalt



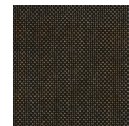
986-63 - Anis



986-67 - Vert



986-89 -
Anthracite



986-90 - Noir

DESIGNER	Elodie Blanchard
APPLICATION	Upholstery
CONTENT	97% wool, 3% nylon
WIDTH	48"
REPEAT	3/8" V x 3/8" H
WEIGHT	33.90 ounces per linear yard
FINISH	None
BACKING	Light acrylic
ABRASION	100,000 double rubs (W)
ORIGIN	United States
FLAME RESISTANCE	California TB 117-2013 Section 1 (Pass)
MAINTENANCE	S: Clean with water free dry cleaning solvent
SUSTAINABILITY	97% rapidly renewable content. Third party certified, Indoor Advantage™ Gold.

Based on disclosure from the supplier this product does not contain harmful chemicals listed on the Red List.

Free of intentionally added PFAS chemicals.

PRICE | GRADE \$89.00 | HBF Grade K

ACT REGISTERED CERTIFICATION     

PRICE LIST [Go to price list](#)

DOWNLOAD [Fabric Product Documents](#)
[Maintenance](#)
[Sustainability Statement](#)
[Sustainability Certification Summary](#)
[Indoor Advantage™ Certificate](#)
[Sustainable Contents](#)

OTHER [Other](#)
[Media Kit](#)
[News & Events](#)
[Presentation](#)
[PFAS - FAQ](#)