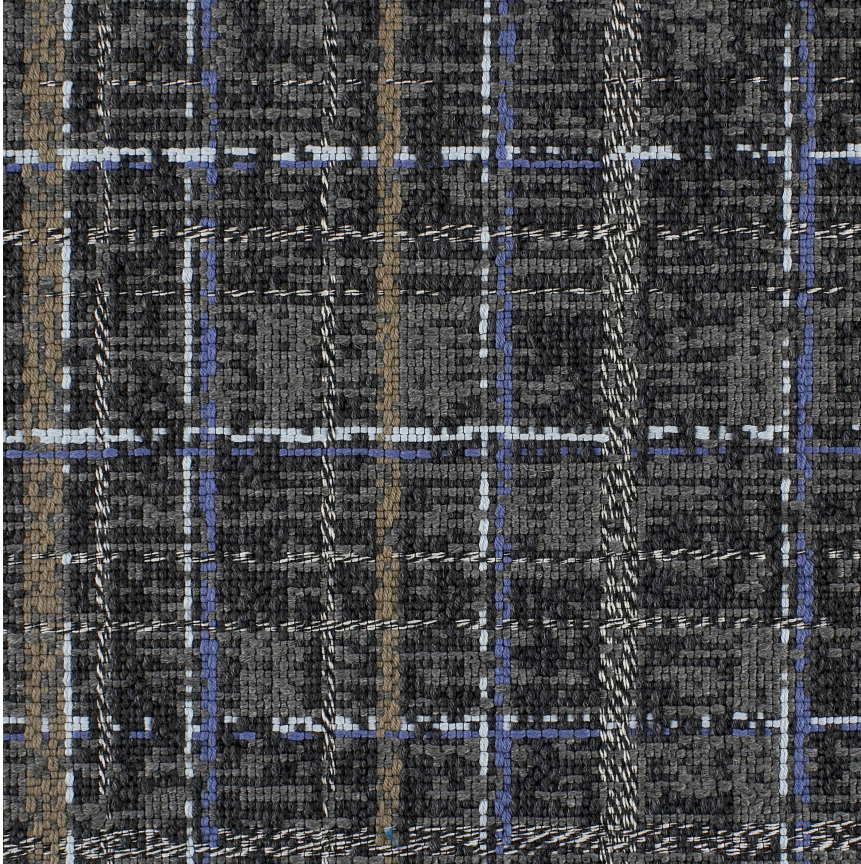


HBF TEXTILES



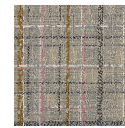
Woven Memory

1019-90 Black Truffle

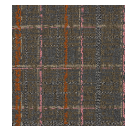
\$105.00/yard



1019-25 -
Honey



1019-40 -
Lychee



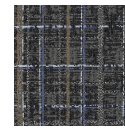
1019-46 -
Rosehip



1019-56 -
Juniper



1019-63 -
Turmeric








1019-90 - Black
Truffle

DESIGNER	Christiane Müller
APPLICATION	Upholstery
CONTENT	49% wool, 39% cotton, 9% polyester, 3% nylon
WIDTH	53"
REPEAT	25 1/2" V x 27" H
WEIGHT	34.29 ounces per linear yard
FINISH	None
BACKING	Light acrylic
ABRASION	100,000 double rubs (W)
ORIGIN	United States
FLAME RESISTANCE	California TB 117-2013 Section 1 (Pass)
MAINTENANCE	S: Clean with water free dry cleaning solvent.





SUSTAINABILITY	88% rapidly renewable content. Third party certified, Indoor Advantage™ Gold. Based on disclosure from the supplier this product does not contain harmful chemicals listed on the Red List. Free of intentionally added PFAS chemicals.
NOTES	Large scale repeat.
PRICE GRADE	\$105.00 HBF Grade L
ACT REGISTERED CERTIFICATION	    
PRICE LIST	Go to price list
DOWNLOAD	Fabric Product Documents Maintenance Sustainability Statement Sustainability Certification Summary Indoor Advantage™ Certificate Sustainable Contents
OTHER	Other Media Kit News & Events PFAS - FAQ