

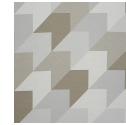
# HBF TEXTILES



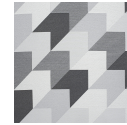
## Upscale

1040-22 Yellow Brick

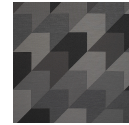
\$60.00/yard



1040-18 -  
Crosswalk



1040-81 - Front  
Stoop



1040-89 -  
Scaffold



1040-22 -  
Yellow Brick



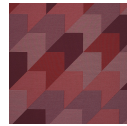
1040-62 -  
Garden



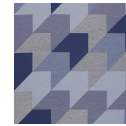
1040-54 -  
Window



1040-45 -  
Storefront



1040-44 -  
Firehouse



1040-55 -  
Playground

<b>DESIGNER</b>	Kelly Harris Smith
<b>APPLICATION</b>	Upholstery, wrapped panel, systems panel
<b>CONTENT</b>	77% post-consumer recycled polyester, 23% polyester
<b>WIDTH</b>	54"
<b>REPEAT</b>	30 1/4" V x 29 1/4" H
<b>WEIGHT</b>	18.18 ounces per linear yard
<b>FINISH</b>	None
<b>BACKING</b>	Acrylic
<b>ABRASION</b>	51,000 double rubs (W)
<b>ORIGIN</b>	United States
<b>FLAME RESISTANCE</b>	California TB 117-2013 Section 1 (Pass), Class A rated ASTM E-84 (unadhered)
<b>MAINTENANCE</b>	<p>WS: Clean with upholstery shampoo or mild dry cleaning solvent.</p> <p>Bleach solutions up to 20% for cleaning difficult stains.</p>




---

**SUSTAINABILITY**

77% recycled content.

Third party certified, Indoor Advantage™ Gold.

Meets BIFMA e3 credit 7.4.4 for Targeted Chemical Elimination which includes PFAS restrictions.

Based on disclosure from the supplier this product does not contain harmful chemicals listed on the Red List.

Free of intentionally added PFAS chemicals.

---

**NOTES**

Large scale repeat.

Bleach cleanable.

---

**PRICE | GRADE**

\$60.00 | HBF Grade E

---

**ACT REGISTERED CERTIFICATION**




---

**PRICE LIST**

[Go to price list](#)

---

**DOWNLOAD**

[Fabric Product Documents](#)  
[Maintenance](#)  
[Sustainability Statement](#)  
[Sustainability Certification Summary](#)  
[Indoor Advantage™ Certificate](#)  
[Sustainable Contents](#)  
[Performance Textiles](#)  
[Cleaning & Disinfection](#)  
[Against COVID-19](#)

---

**OTHER**

**Other**  
[Media Kit](#)  
[News & Events](#)  
[Video - UP Inspiration](#)  
[Video - UP Design Principles](#)  
[Video - UP Collection](#)  
[Digital Binder Card](#)  
[PFAS - FAQ](#)